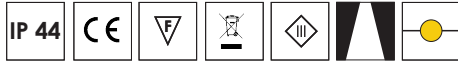


# Canna / R Trio



A recessed fixture with triple spots, featuring a deep aspect into the ceiling to create an illusion on the light source. Designed for indoor spaces in a die-cast aluminum housing. Canna is designed to deliver a high level of glare-free visual comfort.



### Luminaire

Product type Downlight  
 Material Diecast Aluminum / PMMA Cover  
 Finish White, Grey, Black, Custom

### Installation

Environment Indoor  
 Ceiling Type Gypsum, wood  
 Mounting Recessed  
 Dimensions (L x W - H) 330mm x 110mm - 70mm  
 Cutout Dimensions (φ) 3 x 85mm  
 IP 44

### Light Source

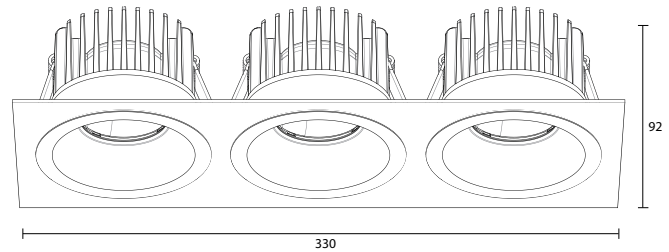
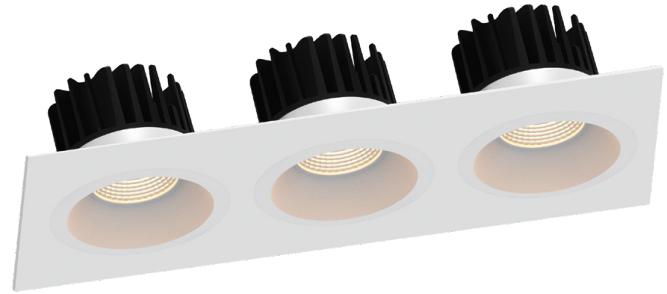
Lumen output From 3000lm to 7320lm  
 Power 27W, 36W, 48W, 54W

### Optics

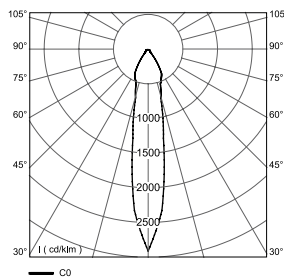
Light controller type Reflector  
 Light emission beam 15°, 25°, 38°, 60°  
 CRI 80+, 90+

### Electrical Equipment

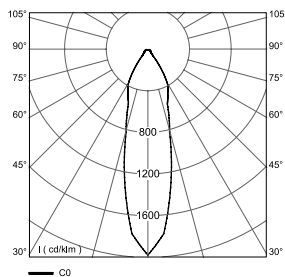
Mains voltage (V) 24  
 Dimming Type On/Off, Dali, 1-10V, Phase Dimming



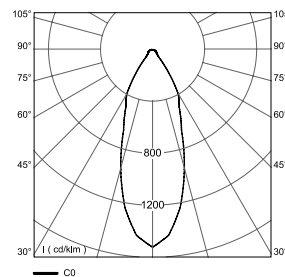
### Polar Curves & LOR



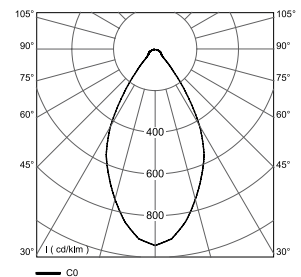
Beam Angle 15°  
LOR: 75%



Beam Angle 25°  
LOR: 79%



Beam Angle 38°  
LOR: 80%



Beam Angle 60°  
LOR: 81%

# Canna / R Trio



**Product Reference:**

Designation	CCT	LED Luminous Output								Product Code*
		Power 9Wx3		Power 12Wx3		Power 16Wx3		Power 18Wx3		
		CRI								
		80	90	80	90	80	90	80	90	
<b>CR09T</b>	<b>2700 K</b>	3600lm	3000lm	4890lm	4080lm	5880lm	4095lm	6540lm	5445lm	<b>CR09T.A27.B.CDE</b>
<b>CR09T</b>	<b>3000 K</b>	3750lm	3120lm	5085lm	4245lm	6120lm	5100lm	6810lm	5700lm	<b>CR09T.A30.B.CDE</b>
<b>CR09T</b>	<b>4000 K</b>	3900lm	3345lm	5280lm	4545lm	6360lm	5475lm	7080lm	6075lm	<b>CR09T.A40.B.CDE</b>
<b>CR09T</b>	<b>5000 K</b>	4020lm	3405lm	5460lm	4605lm	6570lm	5550lm	7320lm	6165lm	<b>CR09T.A50.B.CDE</b>

\* Check the below table to build the code

CRI	A	CCT	-	POWER	B	BEAM ANGLE	C	DIMMING	D	FINISH	E
80+	8	2700K	27	27W	27	15°	1	On/Off	1	Black	1
90+	9	3000K	30	36W	36	25°	2	Dali	2	Grey	2
		4000K	40	48W	48	38°	3	1-10V	3	White	3
		5000K	50	54W	54	60°	4	Phase	4	Custom	4

**Product Code:**